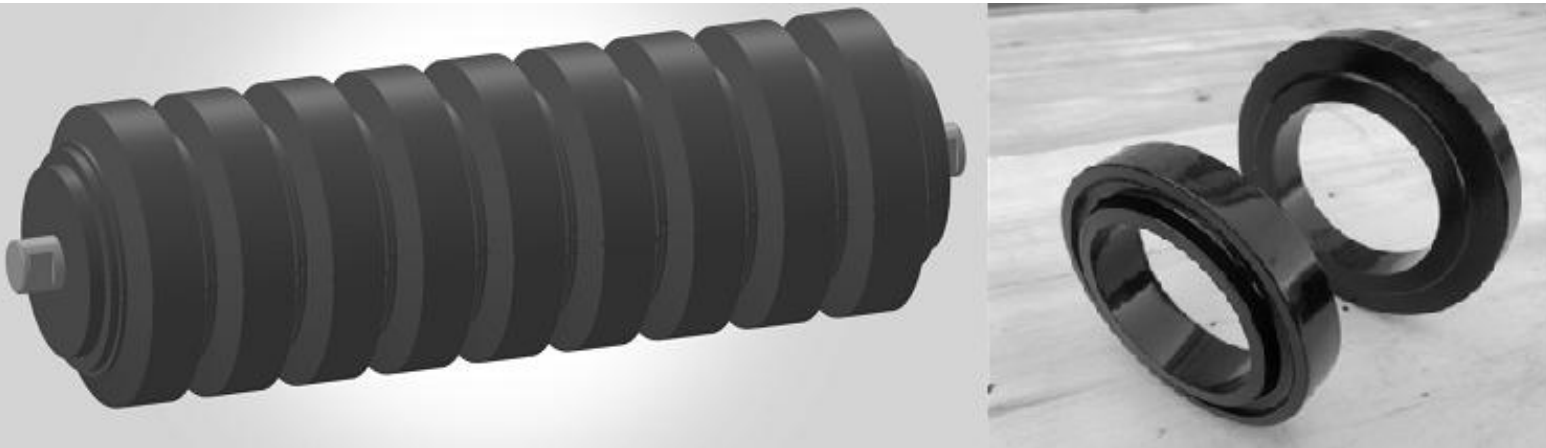


# Impact Rollers



**Conveyor impact roller** is used in loading zone and transfer points applications with excellent absorption ability. It Protects the belt to prevent the lumps, weight or sharp from the free fall of material. The rubber discs are assembled onto an inner heavy-duty steel pipe.

**Standard:** JIS/CEMA/DIN/ISO

**Roller diameter:** D76 – 200mm

**Size:** customized

**Rubber disc +Deep grooved bearings +Labyrinth seals**

